

# Ceiling



## Light Elegant Design

Light-elegant and three-dimensional expression composed of curved surface gives comfort and wellbeing.



## Flexible installation

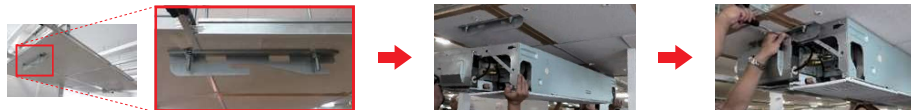
Drain hose and piping can be set in the casing and drawn out flexibly in the right, left, side and down directions.



## Easy installation

The indoor unit can be easily installed under the ceiling due to the new designed mounting.

1. Set mounting brackets
2. Hold up the ceiling and fit the ceiling to the mounting brackets
3. Attach with screws



## Easy maintenance

The front panel can be opened without removing for safe & speedy maintenance.

Drain pan can be taken off for cleaning.

Components in the control box can be easily accessed from the widely open side.



Model : ABYG18KRTA / ABYG22KRTA / ABYG24KRTA / ABYG30KRTA / ABYG36KRTA / ABYG45KRTA  
 ABYG36KRTA [3 phase] / ABYG45KRTA [3 phase] / ABYG54KRTA [3phase]



### Specifications

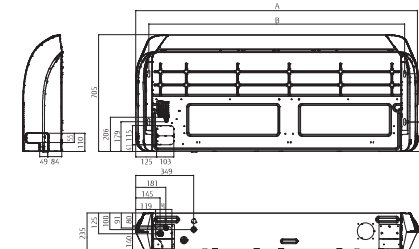
Model No.	Indoor unit		ABYG18KRTA	ABYG22KRTA	ABYG24KRTA	ABYG30KRTA	ABYG36KRTA	ABYG45KRTA	ABYG36KRTA	ABYG45KRTA	ABYG54KRTA	
	Outdoor unit		AOYG18KBTB	AOYG22KBTB	AOYG24KBTB	AOYG30KBTB	AOYG36KBTB	AOYG45KBTB	AOYG36KRTA	AOYG45KRTA	AOYG54KRTA	
Power Source			Single phase -230V, 50Hz					3 phase -400V, 50Hz				
Capacity	Cooling	kW	5.2(0.9-9.1)	6.0(0.9-6.7)	6.8(0.9-8.0)	8.5(2.8-10.0)	9.5(2.8-11.2)	12.1(4.0-13.5)	9.5(2.8-11.2)	12.1(4.0-13.5)	13.4(4.5-14.5)	
	Heating	kW	6.0(0.9-9.1)	7.0(0.9-8.0)	7.5(0.9-9.1)	10.0(2.7-11.2)	10.8(2.7-12.7)	13.5(4.2-16.2)	10.8(2.7-12.7)	13.5(4.2-16.2)	15.5(4.7-16.5)	
Input Power	Cooling/Heating	kW	1.55/1.62	1.87/1.95	2.14/1.97	2.65/2.77	2.96/2.88	4.22/3.84	2.96/2.88	4.22/3.84	4.42/4.43	
		W/W	3.35	3.21	3.18	3.18	3.21	3.21	2.87	2.87	3.01	
COP	Cooling		3.70	3.59	3.81	3.61	3.75	3.52	3.75	3.52	3.5	
	Heating		5.2/4.4	6.0/4.8	6.8/6.0	8.5/8.0	9.5/8.7	12.1/9.2	9.5/8.7	12.1/9.2	13.4/-	
Pdesign	Cooling/Heating(-10°C)	kW	6.2	6.1	6.2	6.1	6.37	-	6.37	-	-	
		W/W	4.1	4.0	4.1	4.0	4.21	-	4.21	-	-	
SEER	Cooling		A++	A++	A++	A++	A++	-	A++	-	-	
	Heating (Average)		A+	A+	A+	A+	A+	-	A+	-	-	
SCOP	Cooling		A++	A++	A++	A++	A++	-	A++	-	-	
	Heating (Average)		A+	A+	A+	A+	A+	-	A+	-	-	
Max. Operating Current	Cooling/Heating	A	12.1/12.1	12.6/12.6	13.6/13.6	22.6/22.6	22.6/22.6	28.5/28.5	10.5/10.5	14.0/14.0	14.0/14.0	
	Cooling		298	344	384	486	524	-	524	-	-	
Annual Energy Consumption	Cooling	kWh/a	1.501	1.677	2.042	2.796	2.904	-	2.904	-	-	
	Heating		2.0	2.5	2.2	3.0	2.8	4.5	2.8	4.5	-	
Moisture Removal	Indoor (Cooling)	l/h	38/36/33/31	42/37/34/31	41/36/32/29	45/40/35/32	44/40/37/32	45/41/39/34	44/40/37/32	45/41/39/34	48	
	Indoor (Heating)		38/36/33/31	42/37/34/31	41/36/32/29	45/40/35/32	44/40/37/32	45/41/39/34	44/40/37/32	45/41/39/34	48	
Sound Pressure Level	Outdoor (Cooling/Heating)	High	50/50	51/51	53/54	53/55	55/55	57/57	55/55	57/57	58/59	
	Indoor (Cooling/Heating)	High	53/53	53/57	56/56	60/60	59/59	60/60	59/59	60/60	63/63	
Sound Power Level	Outdoor (Cooling/Heating)	High	67/62	63/63	65/66	68/69	70/70	71/71	70/70	71/71	73/73	
	Indoor / Outdoor (Cooling)	High	84/02.160	90/02.240	1.230/2.700	1.400/3.750	1.850/3.750	1.900/4.450	1.850/3.750	1.900/4.450	-	
Airflow Rate	Indoor / Outdoor (Heating)	High	84/01.830	90/1.960	1.230/2.700	1.400/3.750	1.800/3.750	1.850/4.450	1.850/3.750	1.850/4.450	-	
		m <sup>3</sup> /h	84/01.830	90/1.960	1.230/2.700	1.400/3.750	1.800/3.750	1.850/4.450	1.850/3.750	1.850/4.450	-	
Net Dimensions H x W x D	Indoor	mm	235-1,080-705	235-1,080-705	235-1,390-705	235-1,390-705	235-1,700-705	235-1,700-705	235-1,700-705	235-1,700-705	235-1,700x705	
	Outdoor	mm	632-799-290	632-799-290	632-799-290	716-940-320	788-940-320	788-940-320	998-940-320	788-940-320	998-940-320	
Weight	Indoor	kg(lbs)	24(53)	24(53)	31(68)	31(68)	38(84)	38(84)	38(84)	40(88)	40(88)	
	Outdoor	kg(lbs)	36(79)	38(84)	42(93)	52(115)	52(115)	67(148)	52(115)	67(148)	67(148)	
Connection Pipe Diameter (Liquid / Gas)		mm	6.35/12.7	6.35/12.7	6.35/12.7	9.52/15.88	9.52/15.88	9.52/15.88	9.52/15.88	9.52/15.88	9.52/15.88	
		mm	25/32	25/32	25/32	25/32	25/32	25/32	25/32	25/32	25/32	
Drain hose Diameter (I.D./O.D.)		m	30(20)	30(20)	30(20)	50(30)	50(30)	50(30)	50(30)	50(30)	50(30)	
		m	20	25	25	30	30	30	30	30	30	
Max Pipe Length (Pre-Charge)		m	30(20)	30(20)	30(20)	50(30)	50(30)	50(30)	50(30)	50(30)	50(30)	
		m	20	25	25	30	30	30	30	30	30	
Operation Range	Cooling	°CDB	-15 to 46	-15 to 46	-15 to 46	-15 to 46	-15 to 46	-15 to 46	-15 to 46	-15 to 46	-15 to 46	
	Heating		-15 to 24	-15 to 24	-15 to 24	-15 to 24	-15 to 24	-15 to 24	-15 to 24	-15 to 24	-15 to 24	
Refrigerant	Type (Global Warming Potential)		R32(675)	R32(675)	R32(675)	R32(675)	R32(675)	R32(675)	R32(675)	R32(675)	R32(675)	
	Charge	kg(CO2eq-1)	1.02 (0.689)	1.25 (0.844)	1.25 (0.844)	1.901 (1.283)	1.901 (1.283)	2.701 (1.823)	1.901 (1.283)	2.701 (1.823)	2.701 (1.823)	

### Optional parts

Compact Remote Controller:	UTY-RCRY21	External Connect Kit:	UTY-XWZXZG	Network Converter for single split (DC power supply) type:	UTY-VTQX
Wired Remote Controller (Touch Panel):	UTY-RNRYZ3	Wireless LAN Interface:	UTY-TFSXZ1	Network Converter for single split (AC power supply) type:	UTY-VTQXV
Wired Remote Controller (Touch Panel):	UTY-RLRY	MODBUS* Converter:	UTY-VM5X		
Simple Remote Controller (Without operation mode):	UTY-RHRY	KiNX* Converter	UTY-VK5X	(Outdoor unit 30/36/45/54)	UTY-XWZXZ3
Simple Remote Controller:	UTY-RSRY	Drain Pump Unit:	UTZ-DBP24T	External Connect Kit:	
External Switch Controller:	UTY-TERX	IR Receiver Unit:	UTY-LBTVH		
External input and output PCB:	UTY-XCSX	UTP-FX24A (18/22/24)			
External input and output PCB Box:	UTZ-GXRA	UTP-FX35A (30/36/45/54)			

### Dimensions

(Unit: mm)



	ABYG18/22KRTA	ABYG24/30KRTA	ABYG36/45/54KRTA
A	1,080	1,390	1,700
B	923	1,233	1,543